

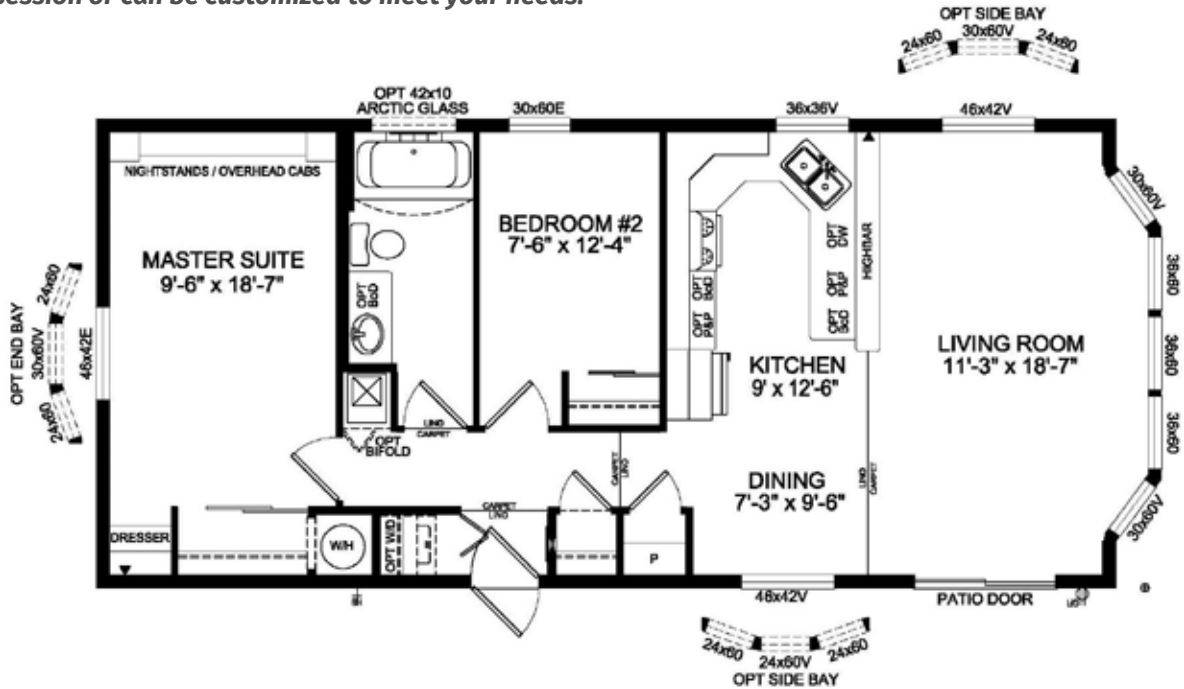
# Lake House

20' x 48' 960 sq. ft.



CrossCountry  
HOMES

*This 20' wide show home is ideal for making your vacation property a true second home. This home has huge windows that allow you to bring the outdoors in, and has extra storage built into the master bedroom. This model is available for quick possession or can be customized to meet your needs.*



View more photos and check out other homes at  
[www.crosscountryhomes.com](http://www.crosscountryhomes.com)

53131, R.R. 262 Acheson, Alberta T7X 5A4  
Phone 780.470.8000 Toll Free 1.800.470.5444  
Fax 780.470.5506 Email : [info@crosscountryhomes.com](mailto:info@crosscountryhomes.com)

# Lake House

20' x 48' 960 sq. ft.



**CrossCountry**  
HOMES

## STANDARD SPECIFICATIONS

### GENERAL CONSTRUCTION

- Maintenance free vinyl lap siding and metal fascia
- 2" x 10" floor joists 16" O.C.
- Heavy tubular steel frame
- Fiberglass shingle roof (25 year)
- 7/16" roof sheathing
- Engineered full 4-12 pitch roof trusses
- Textured (primed) gyproc ceiling
- 2" x 6" exterior walls @ 16" o.c. strengthened with 3/8" OSB sheathing on inside and outside wall
- 5/8" tongue and groove OSB Floor Decking glued and screwed
- Coach lights at all exterior entrances
- Screen doors on front and rear entrances
- Residential maintenance free Low E PVC windows c/w vinyl sills, screens and security locks
- Exterior GFI electrical outlet and frost free water tap
- Insulation meets or exceeds codes
- Floors R-20, Walls R-20 & Ceiling R-40 (min)

### TASTEFUL INTERIORS

- Plush saxony carpet in living room, family room, great room, hall, and all bedrooms (certain models)
- Quality cushioned linoleum flooring all other areas (Selected by décor)
- Coordinating window valance over venetian blinds in all areas except bathrooms

### BRIGHT, BEAUTIFUL KITCHENS

- Double stainless steel sink
- Deluxe tile backsplash
- 19 cu ft 2-door frost free refrigerator
- 30" easy clean electric range
- Range hood with light
- Pantry – select models
- Doweled, full modular cabinetry w/ crown moulding
- Three distinctive colors of cabinet doors to choose from

### SPACIOUS BATHS

- One-piece quality fiberglass tub and shower units
- Curved Shower rods in all tubs
- Deluxe tile backsplash
- GFI receptacle
- Power bath fan(s)
- Theatrical Lights
- Residential type toilet and sink

### UTILITY SERVICES

- 100 amp electrical panel
- High efficiency (95.1+AFUE) gas furnace with condensation pump
- 33 Imp. (40 US) gallon electric gas water heater
- Primary exhaust fan c/w dehumidistat
- CO2/Smoke Detector(s) c/w battery backup
- GFI protected receptacle for heat tape
- Heat tape plug
- Communication outlet (2) – Kitchen and Master Bedroom

## SPECIAL FEATURES

- Built to the A-277 code
- 8' Ceilings
- Cathedral ceiling throughout
- Cathedral cove moulding throughout
- Décor switches and receptacles
- 12" perimeter vented eaves
- Residential-type appliances and bathroom fixtures
- Deluxe bedroom nightstand and cabinet
- Air conditioned ready (split system)
- Front living room comes with bay window
- Front porch model comes with 9-lite door and transom windows in living room and dining room

## CROSS COUNTRY HOMES STANDARDS

- Delivery Within 100 Miles/160 km Included
- Pre-Delivery Site Inspection and Consultation
- Post Delivery Walk Through and Inspection
- Service Call and Repairs
- 10 Year Warranty through Manufacturer
- White Vinyl Skirting Supplied

## SHOW HOME UPGRADES

Upgrade	Price	Upgrade	Price
Wire for ceiling fan w/ 2 switches	\$240	Extra communication outlet	\$70
Shut off valves on all fixtures	\$195	Wireless Door chime	\$120
Bi-fold door at furnace	\$240	Optional Lino	\$415
Summit Bay window	\$1,885	Trap windows	\$2,080
Built in Dishwasher	\$660	Space saver microwave	\$510
Side by side Fridge	\$960	Optional Counter Top	\$475
Pot lights in kitchen	\$435	Black Appliances	\$380
Pendant lights in kitchen	\$200	Colonial Moulding	\$630
Hook-up for stacked washer/dryer	\$315	Full Height Tile Backsplash	\$505
<b>TOTAL UPGRADES</b>	<b>\$11,000</b>		

View more photos and check out other homes at  
[www.crosscountryhomes.com](http://www.crosscountryhomes.com)

53131, R.R. 262 Acheson, Alberta T7X 5A4  
Phone 780.470.8000 Toll Free 1.800.470.5444  
Fax 780.470.5506 Email : [info@crosscountryhomes.com](mailto:info@crosscountryhomes.com)